

Signature



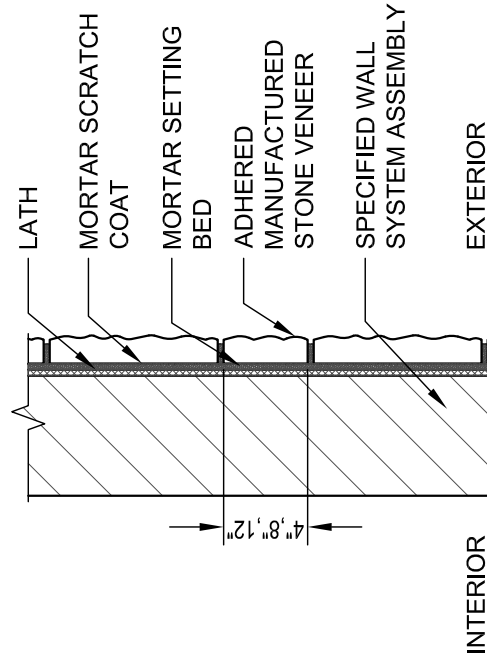
Signature Stone

211 30th Street
Greeley, 80631
970-351-0270
WWW.SIGNATURESTONE.COM



Select Color

- Basalt
- Chardonnay
- Crestone
- Arkansas Valley
- Black Slate
- Vallecito
- Oak Creek
- Cypress Hill
- Custom Color



Stone Style

Ledgestone

SPECIFICATIONS

MORTAR JOINT SIZE: 3/8" - 1/2"

CORNER RETURNS: 2 1/2" - 8 1/2"

DEPTH VARIATIONS: 1 - 2"

MANUFACTURE NOTES:

- DIMENSIONS LISTED ARE NORMAL. PLEASE CHECK THE PRODUCT SIZE TO ENSURE THE RIGHT FIT FOR YOUR APPLICATION.
- PLEASE REFER TO MANUFACTURER FOR PRODUCT SAMPLES BEFORE SELECTING COLORS.

NOTES:

- DO NOT SCALE DRAWINGS.
- THIS DRAWING IS INTENDED FOR USE BY ARCHITECTS, ENGINEERS, CONTRACTORS, CONSULTANTS AND DESIGN PROFESSIONALS FOR PLANNING PURPOSES ONLY. THIS DRAWING MAY NOT BE USED FOR CONSTRUCTION.
- ALL INFORMATION CONTAINED HEREIN WAS CURRENT AT THE TIME OF DEVELOPMENT BUT MUST BE REVIEWED AND APPROVED BY THE PRODUCT MANUFACTURER TO BE CONSIDERED ACCURATE.