

STAIR TREAD
TYPICAL DETAILS



SIGNATURE STONE
211 30TH STREET
GREELEY, CO 80631
CONTACT: JERRY NAVA
970-351-0270



MAGNUM GEO-SOLUTIONS, LLC
138 E. 4TH STREET, SUITE E
LOVELAND, CO 80537
970-635-1851
800-822-7437
WWW.MAGNUMGEO.COM

THESE DRAWINGS AND ACCOMPANYING SPECIFICATIONS, AS INSTRUMENTS OF SERVICE ARE THE EXCLUSIVE PROPERTY OF THE ENGINEER AND THEIR USE AND PUBLICATION SHALL BE RESTRICTED TO THE ORIGINAL SITE FOR WHICH THEY WERE PREPARED. REUSE, REPRODUCTION OR PUBLICATION BY ANY METHOD IN WHOLE OR IN PART IS PROHIBITED EXCEPT BY WRITTEN PERMISSION FROM THE ENGINEER. TITLE TO THESE PLANS AND SPECIFICATIONS SHALL REMAIN WITH THE ENGINEER WITHOUT PREJUDICE, AND VISUAL CONTACT WITH THEM SHALL CONSTITUTE PRIMA FACIE EVIDENCE OF ACCEPTANCE OF THESE RESTRICTIONS.

COPYRIGHT MAGNUM GEO-SOLUTIONS, LLC
ALL RIGHTS RESERVED.

PLAN NOT VALID WITHOUT ORIGINAL WET
STAMP OR VERIFIED DIGITAL SIGNATURE

PRECAST STAIR TREADS

NO.	DATE	REVISION			

ENGINEER: WGT PROJECT NO: 25-2092-0000
PROJECT MGR: WGT ORIGIN DATE: 2025/12/08
REVIEWER: WGT SCALE: AS SHOWN
SHEET: TR-1

DOCUMENT NUMBER: ED-T002.6 TEMPLATE 11x17 BORDER

GENERAL NOTES:

BASIS OF DESIGN:

- LIVE LOAD ON STAIRS:
 - 100 PSF, or
 - 300 POUND POINT LOAD
- TREADS LONGER THAN 5'-3" MAY EXCEED DESIGN DEFLECTION UNDER FULL LIVE LOAD.

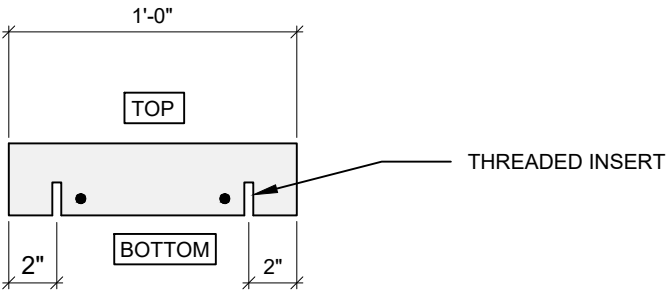
CONCRETE:

- DESIGN BASED ON ACI 318
- CONCRETE DESIGN STRENGTH (f'_c) = 5000 psi.
- CONCRETE HAS STANDARD GRAY COLOR, WHICH MAY VARY.
- TOP SURFACE SHALL HAVE A BROOM FINISH.

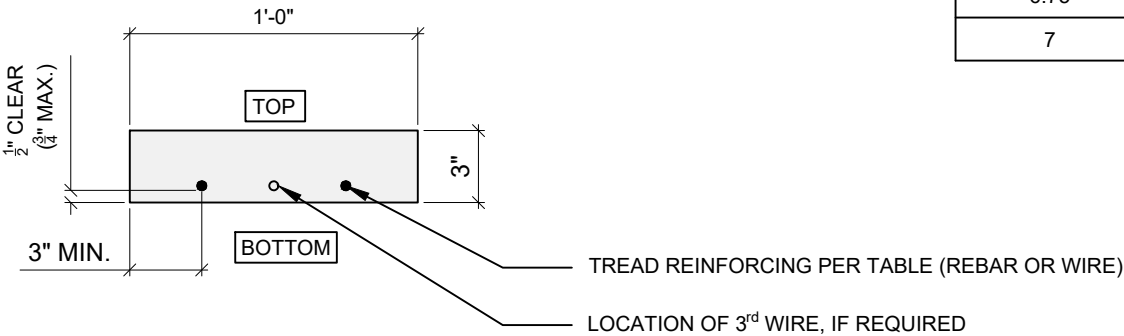
REINFORCING STEEL:

- #3 REINFORCING BARS SHALL BE DEFORMED GRADE 40 STEEL AND SHALL CONFORM TO ASTM A615.
- WIRES SHALL HAVE A DESIGN YIELD STRENGTH (F_y) OF 65 ksi.
- MINIMUM CONCRETE COVER SHALL BE $\frac{1}{2}$ -INCH, AS SHOWN.

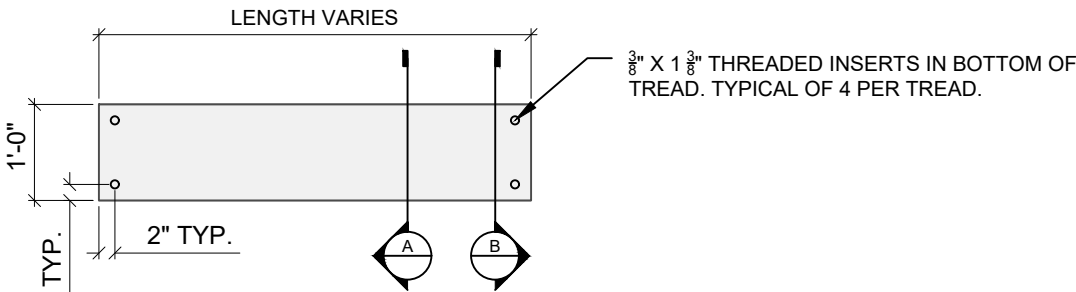
TREAD REINFORCING		
TREAD LENGTH (feet)	REBAR OPTION	WIRE MESH OPTION
2.5	(2) #3 BAR	(2) W4.0 WIRES
2.75	(2) #3 BAR	(2) W4.0 WIRES
3	(2) #3 BAR	(2) W4.0 WIRES
3.25	(2) #3 BAR	(2) W4.0 WIRES
3.5	(2) #3 BAR	(2) W4.0 WIRES
3.75	(2) #3 BAR	(2) W4.0 WIRES
4	(2) #3 BAR	(2) W4.0 WIRES
4.25	(2) #3 BAR	(2) W4.0 WIRES
4.5	(2) #3 BAR	(2) W4.0 WIRES
4.75	(2) #3 BAR	(2) W4.0 WIRES
5	(2) #3 BAR	(2) W4.0 WIRES
5.25	(2) #3 BAR	(2) W4.0 WIRES
5.5	(2) #3 BAR	(3) W4.0 WIRES
5.75	(2) #3 BAR	(3) W4.0 WIRES
6	(2) #3 BAR	(3) W4.0 WIRES
6.25	(2) #3 BAR	(3) W4.0 WIRES
6.5	(2) #3 BAR	(3) W4.0 WIRES
6.75	(2) #3 BAR	(3) W4.0 WIRES
7	(2) #3 BAR	NOT APPLICABLE



SECTION B
SCALE: 1-1/2"=1'-0"



SECTION A
SCALE: 1-1/2"=1'-0"



PLAN
SCALE: 1/2"=1'-0"

TYPICAL TREADS